



KD 610R
Compact. Versatile.
CNC Processing Centre





KD610R CNC Drilling Centre - The Versatile one

KDT – an introduction:

KDT are a major manufacturer of panel-based machinery with over 20 years of technical knowledge and experience. They export successfully to all major world markets a comprehensive range of Edgebanders, Beamsaws, Panelsaws, Flow through production lines, CNC routing and Drilling machines. Annual production exceeds 19,000 machines

<https://www.youtube.com/watch?v=xoqp9XiLNds&t=10s>

Click the link and take a look...

KDT machines are built to work hard and designed to last.



www.ledamachinery.com.au

All features and product specifications subject to change without notice



KD610R CNC Drilling Centre - The Versatile one

KDT KN610R – Versatile, Compact. 6 sided processing.



Take a look at the KD610R work units and layout here...

https://www.youtube.com/watch?v=l8UiJ0yX_RY



www.ledamachinery.com.au

All features and product specifications subject to change without notice



KD610R CNC Drilling Centre - The Versatile one

Key Features of the KD-610R model

- Compact dimensions yet able to process all 6 sides of a panel
- Requires only one operator
- Loading and unloading of parts from one side
- Full integration with BASIS and support for DXF, XLS, XML, MPR standards
- Clear on-screen Visualization of processing

Key machining capabilities

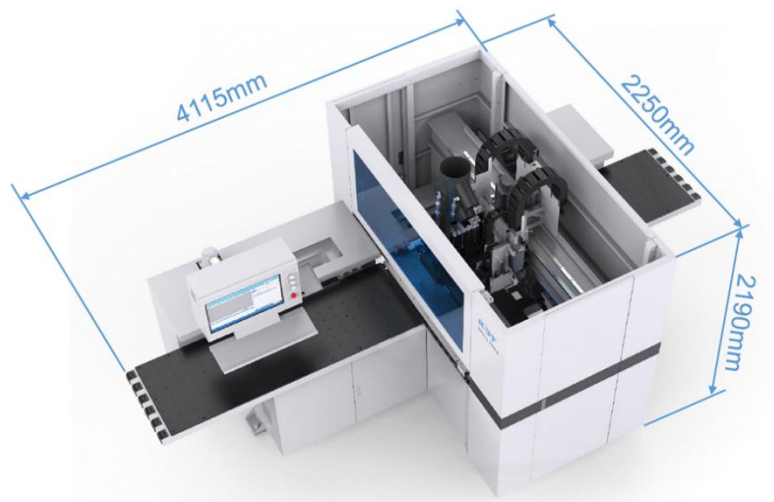
CNC drilling center KD-610R with two drilling groups on top and bottom for drilling from 6 sides

Includes a milling spindle designed for high-precision drilling of through and blind holes in the ends and planes of furniture panels, which allows complete processing in one pass of the part.

Equipped with a milling unit for milling both simple straight grooves, for example a groove for the back wall or bottom of a drawer, and profile processing.

- Two drilling and milling groups (top and bottom);
- Milling unit as standard;
- High processing speed: 100/90/50 m/min;
- Drilling from 6 sides;
- Drilling of small-sized parts from 70x35 mm;
- Automatic lubrication of X and Y travel guides;
- Visualization of processing
- Batch drilling mode supported;
- Ability to work with optimizer programs as well as print labels;
- Scanner for reading additive cards using barcodes.

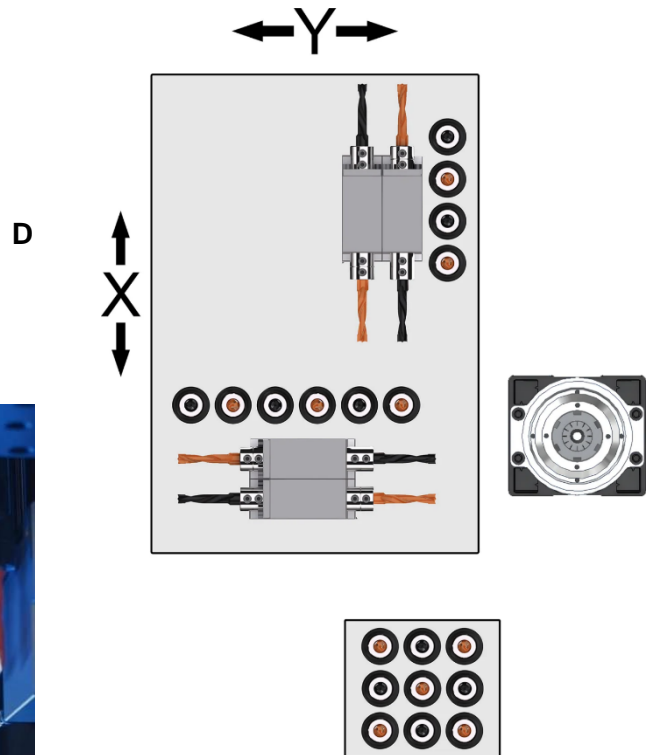
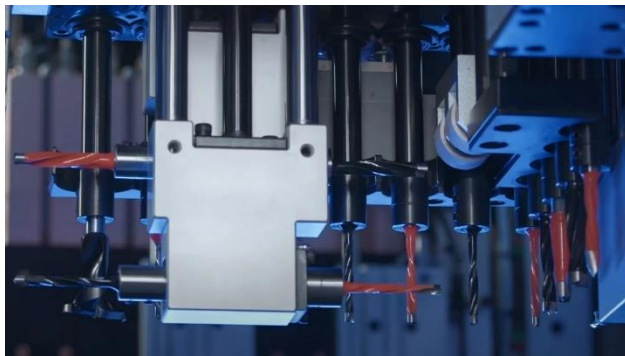
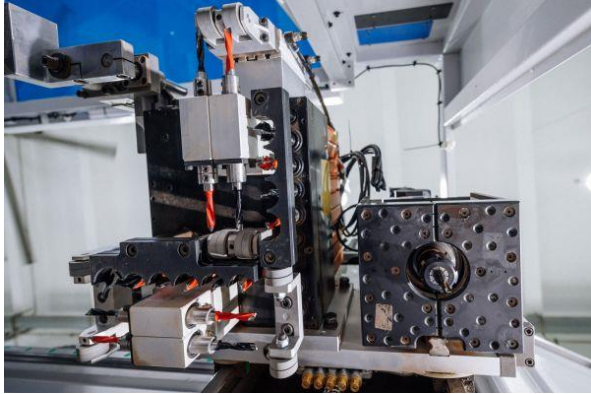
Very Compact footprint





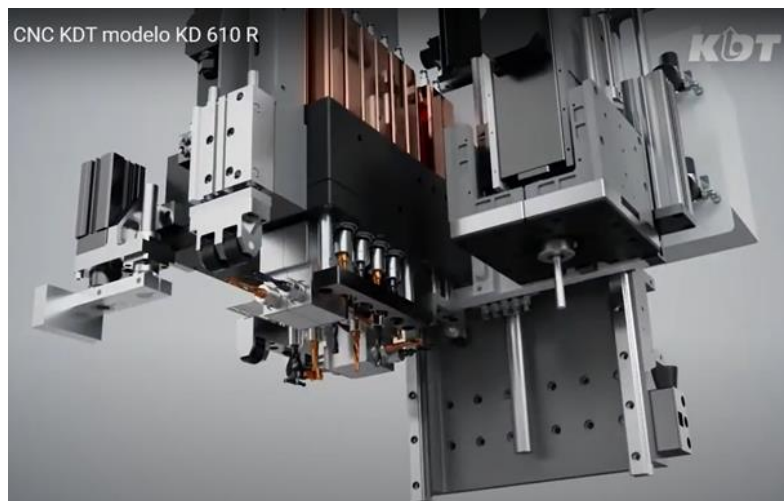
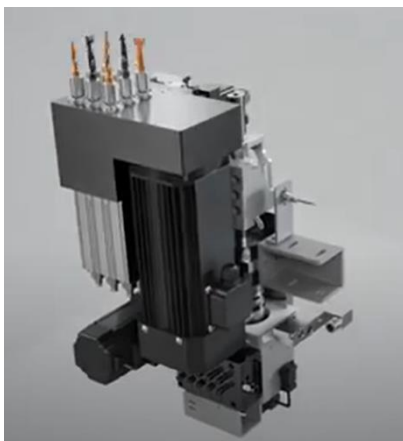
KD610R CNC Drilling Centre - The Versatile one

Versatile and practical drilling groups



2 drilling groups installed on: 8 horizontal spindles, 19 vertical spindles (10 on top, 9 on bottom).

3.5 kW milling spindle for cutting straight and curved grooves.



www.ledamachinery.com.au

All features and product specifications subject to change without notice



KD610R CNC Drilling Centre - The Versatile one

Very clever clamps

Two automatic clamps allow you to securely fix a workpiece with a length from 70 mm to 2800 mm and perform fewer interceptions during drilling, which significantly increases the speed of the work cycle compared to machines with one clamp. **Maximum speed to 100 m/min.**

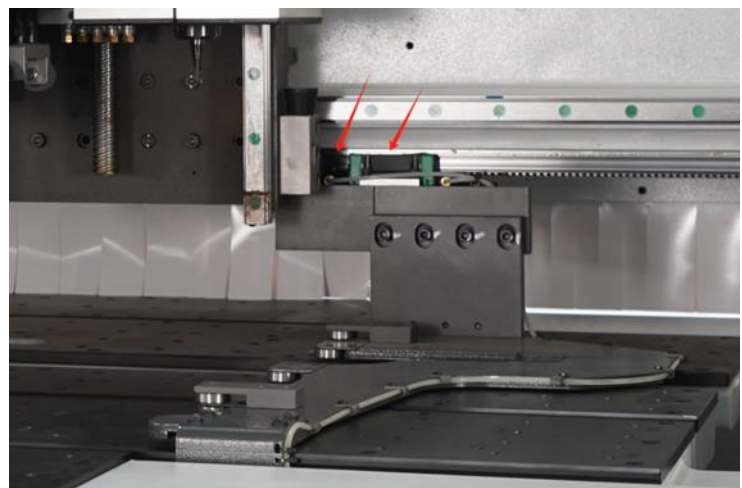


Batch drilling mode - processing of two parts simultaneously



Side Alignment

The side aligner ensures precision work by fixing it to the linear guide with two carriages with bearings. The movement is carried out by a servomotor.



www.ledamachinery.com.au

All features and product specifications subject to change without notice



KD610R CNC Drilling Centre - The Versatile one

User friendly Controller

Windows-based control panel with the ability to read barcodes, which allows you to increase machine productivity.

A scanner for reading barcodes is included in the basic equipment of the machine.

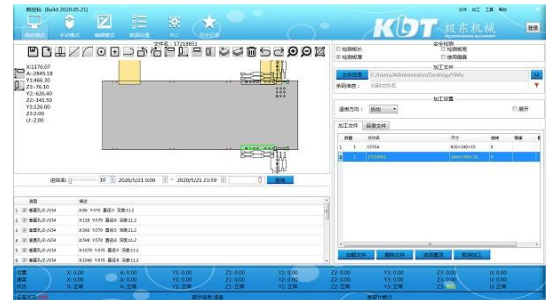
SOFTWARE....

Support for MPR, XML, DXF file formats

The machine can process two panels simultaneously, both from the top and bottom, within one working cycle.

The software allows you to make a simulation and calculate the processing time

Comprehensive diagnostics and fault-finding with reset methods and 'fix it' steps - often no Technician required.

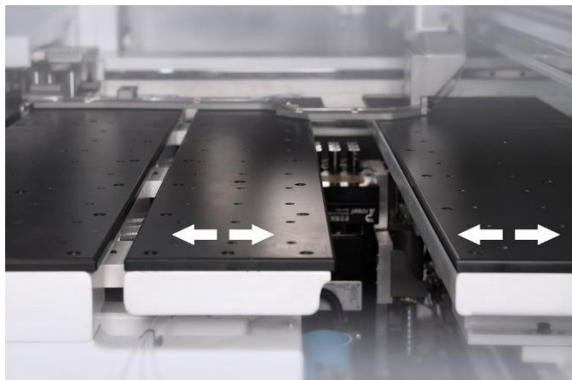


Ability to work with all popular programs for optimizing additive cards and label printing.

The easy movement of parts on the table occurs due to the air flow supplied by a special electric fan through the holes in the upper part of the table, thereby eliminating the possible appearance of scratches on the lower surface of the part.



Movable tables in the drilling area allow through milling.



www.ledamachinery.com.au

All features and product specifications subject to change without notice



KD610R CNC Drilling Centre - The Versatile one

Additional air cushion worktable sections improve support for parts, enhancing machining quality

The intelligent air cushion platform in the processing area moves left/right (KDT patent), improving the accuracy, speed and quality of processing.

Large and sturdy infeed-/outfeed tables make panel handling easy



The minimum workpiece size is 70x35 mm, which allows for the addition of small-sized parts.

Safety enclosure protects the operator from injury.

Quality electronics..

The machine uses high-precision INVT servos, which ensures excellent accuracy and high productivity.



A sealed dust- and moisture-resistant cabinet with electronic components from the world's leading manufacturers is removed from the processing area, which extends the service life of electrical components and ensures ease of maintenance



www.ledamachinery.com.au

All features and product specifications subject to change without notice



KD610R CNC Drilling Centre - The Versatile one

Specifications...

Workpiece length, mm	70-2800
Workpiece width, mm	35-1000
Workpiece thickness, mm	9-60
Workpiece gripper travel speed (X), m/min	100
Maximum speed along the axis (Y), m/min	90
Maximum speed along the axis (Z), m/min	50
Number of drilling groups, pcs	2
Number of vertical spindles (upper group), pcs	10
Number of vertical spindles (lower group), pcs	9
Number of horizontal spindles, pcs	8
Milling unit, kW	3,5
Suction pipe diameter, mm	1x150 + 1x200
Full power, kW	15,7
Working pressure, MPa	0.6
Machine dimensions (LxWxH), mm	4115x2250x2210
Weight, kg	2700

NOTE!

Specifications and appearance of the product are subject to change without notice.